

67 Central Street

Wellesley Center, MA



Prime Retail Space for Lease

Located in the community shopping area of Wellesley, this recently built-out space offers excellent visibility and location.

Adjacent tenants include a three “door” Talbot’s, Chico’s, Peet’s, LF apparel, Tumi, Starbuck’s Coffee, Gap, Ann Taylor, CVS and many other unique local/national retailers and restaurants.

This is a thriving community center with an affluent and sophisticated customer base.

Space: 2,633 SF on street level with additional full basement

Base Rent/Tax/Nets: Call for further information

HVAC/Utilities: Separately metered to tenant

Availability: As needed – current tenant will vacate

Parking/Access: Customer parking/ delivery to rear of building

Demographics:

| Radius | Population | Median HH Income |
|--------|------------|------------------|
| 3 Mile | 53,647 | \$127,567 |
| 5 Mile | 130,704 | \$119,231 |



Urban/Born Associates

FOR LEASING INFORMATION:

Annette Born

office: 617.277.3180

cell: 617.308.0750

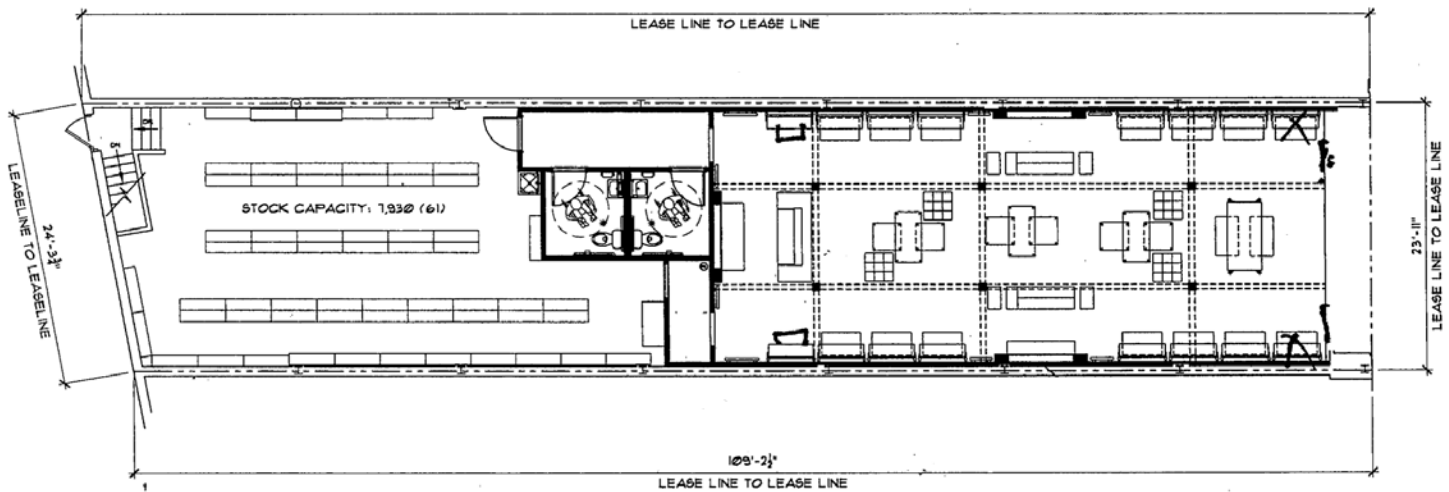
email: bornal@msn.com

website: www.ubaboston.com

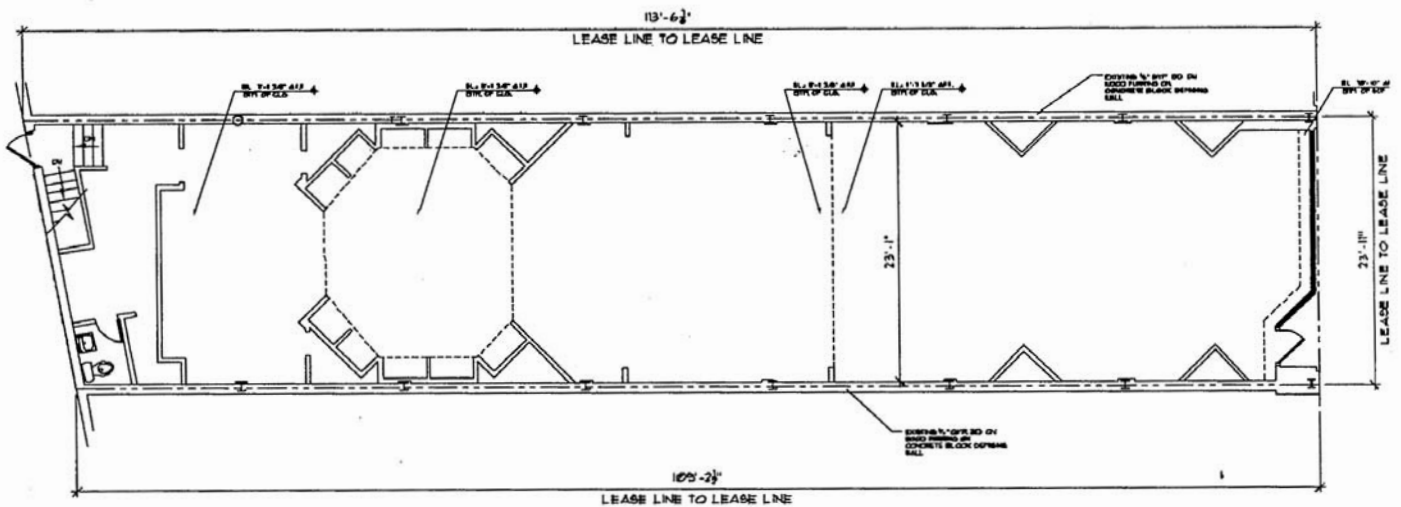
67 Central Street

Wellesley Center, MA

STREET LEVEL PLAN



LOWER LEVEL PLAN



Urban/Born Associates

FOR LEASING INFORMATION:

Annette Born

office: 617.277.3180

cell: 617.308.0750

email: bornal@msn.com

website: www.ubaboston.com